



# Tyler Museum of Art Teacher Newsletter: February 2022

## Exhibitions:



### *Norman Rockwell: Drawings, Paintings, and Prints*

The exhibition presents a collection of the American painter, illustrator, and storyteller Norman Rockwell's drawings, paintings, and prints. A portion of the artworks are from the museum's permanent collection.

The exhibition is open and will close on March 13<sup>th</sup>, 2022.

For information on the artwork, [click here!](#)

For information on the exhibit, [click here!](#)



### *Building a Legacy III:*

#### *Selections from the Permanent Collection*

The *Building a Legacy III Exhibition* celebrates the Tyler Museum of Art's 50<sup>th</sup> anniversary. It showcases various art mediums and styles that reside in our permanent collection.

The exhibition will open on February 13, 2022 and will close on May 1, 2022.

For information about the artwork, [click here!](#)

## Educational Activities and Events:

### **FAMILY DAY TO GO!**



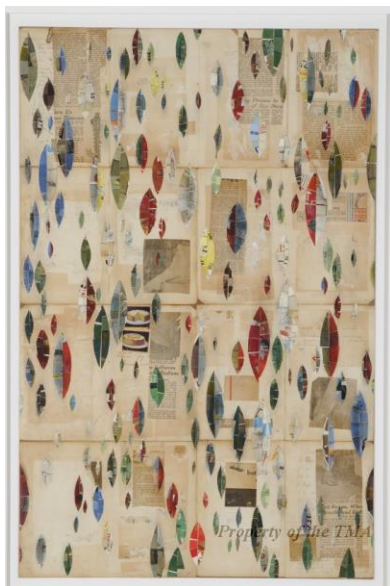
#### **Family Day To Go Packets**

Each second Saturday of the month, the TMA creates a free take-home-packet for students ranged from kindergarten to 12<sup>th</sup> grade. It includes themed art activities, art supplies, and a snack. All of the activities are compliant with the TEKS.

For February, the packets will contain Valentine's Day art activities. The packets will be available for pick-up at the museum on February 12<sup>th</sup>, 2021.

For more information on the Family Day To Go packets, [click here!](#)

## TMA Lesson Plans for Elementary, Middle School, and High School



#### **Lesson Plan: Lance Letscher's *Red Line***

This lesson plan contains the Texas TEKS for Elementary, Middle, and High School art teachers. In this lesson, students will learn about creating paper collages that express a type of color theory.

To access the lesson plan, [click here!](#)

For information on the artwork, [click here!](#)



### **Lesson Plan: Irene Aguilar's**

#### ***Angel, Playing Horn***

This lesson plan contains the Texas TEKS for Elementary, Middle, and High School art teachers. The lesson teaches the importance of Folk Art in Mexico and allows the students to connect with their personal holidays and traditions by creating their own Folk Art.

To access the lesson plan, [click here!](#)

For information on the artwork, [click here!](#)



### **Tyler Museum of Art's**

#### **Elements and Principles of Design**

This lesson plan defines each of the principles and elements of design. Art examples of each element and principle are included with the vocabulary words. The artworks used in the lesson are from the Tyler Museum of Art's permanent collection.

To access the lesson plan, [click here!](#)

For information on the artwork, [click here!](#)

## **Schedule a School Tour with the Tyler Museum of Art**



### **Planning a School Tour**

If you are interested in scheduling a tour for your students at the museum, please contact [ranthony@tylermuseum.org](mailto:ranthony@tylermuseum.org) and provide the following information: the grade level of the visiting students, the number of students who will attend, and three days in your class schedule that are available for the tour.

For more information, [click here!](#)



## **Student Exhibitions:**



### **Previous Best in Show:**

#### ***17<sup>th</sup> Annual High School Art Exhibition***

Alex Rodriguez, class of 2020 – 2021, acrylic and found objects, Sulphur Springs High School.

#### ***18<sup>th</sup> Annual High School Art Exhibition***

The *18<sup>th</sup> Annual High School Art Exhibition* is a yearly student exhibition held at the museum. High school teachers in the East Texas area submit their student's work to be exhibited in the museum's gallery.

The goal of this event is to showcase high school artwork and encourage the East Texas community to see the amazing artwork created by local students.

High school teachers need to email the museum at [ranthony@tylermuseum.org](mailto:ranthony@tylermuseum.org) to let the education department know you want to participate in the event. Teachers can also call the museum at: (903) – 595 – 1001.

After you contact the education department or you receive an email from the museum inquiring your interest, you will receive the exhibition entry form and the art format requirements.

Participating teachers need to bring their selected student artwork to the museum between **February 21<sup>st</sup>, 2022 and March 4<sup>th</sup>, 2022.**

## **Tyler Museum of Art Connection**

For more information about the Tyler Museum of Art's events, activities, and educational tours:

Email: [ranthony@tylermuseum.org](mailto:ranthony@tylermuseum.org)

Call: 903-595-1001

The next TMA Newsletter will be sent to teachers on: March 1<sup>st</sup>, 2022.

Visit our website at: <https://tylermuseum.org/>

Visit our Facebook at: <https://www.facebook.com/TylerMuseumofArt>