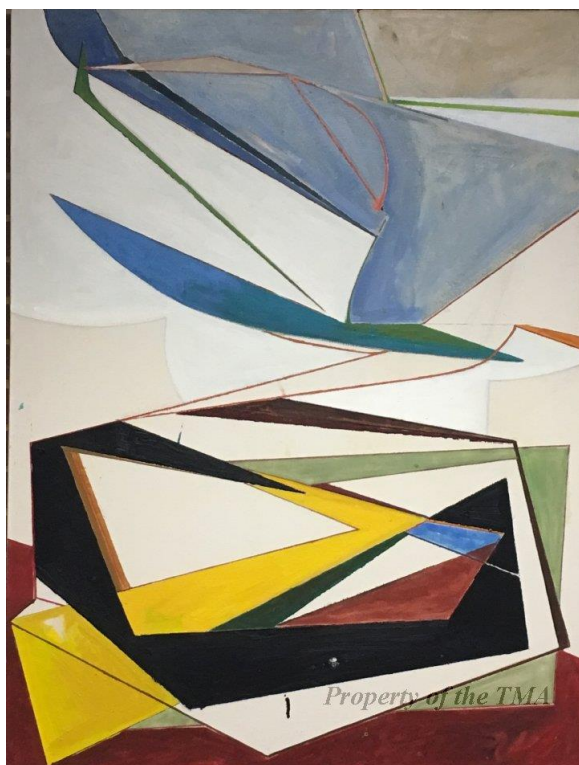




# Tyler Museum of Art's Teacher Newsletter: February 2025

## Exhibitions



### ***New To Town: Recent Acquisitions***

*New To Town: Recent Acquisitions* exhibition showcases a collection of new artworks that were added to the museum's permanent collection in the past few years. The exhibition features various paintings, prints, embroidery work, and photographs.

The exhibition is currently open and it will close on April 13, 2025.

For information on the artwork, [click here!](#)



### ***My Own Backyard: Photographs by Earlie Hudnall Jr.***

*My Own Backyard: Photographs by Earlie Hudnall Jr.* exhibition features a collection of moments taken in the Third, Fourth, and Fifth Wards of Houston, Texas. The collection celebrates the small moments and major holidays experienced by

The exhibition is currently open, and it will close on March 9, 2025.

For information on the artwork, [click here!](#)

## **Educational Activities and Events:**



### **Family Day: In Person**

The Tyler Museum of Art's Family Day program is held every second Saturday of the month from 1:00pm – 4:00pm at the museum. The event will have art activities for children and students of all ages, art books to read for all ages, coloring pages of the museum's permanent collection, and snacks. All art activities are compliant with the TEKS. Additionally, all Family Day participants will get free admission to the exhibitions.

For February, the art activity will be a Valentine's Day Multi-Media Collage. The event will be held at the museum on February 8, 2025 between 1:00pm – 4:00pm.

For more information on the Family Day Event, [click here!](#)

## **TMA Lesson Plans for Elementary, Middle School, and High School**



### **Lesson Plan: Jorge Wilmot, *Duck***

This lesson plan contains the National Learning Standards for Visual Arts and the Texas TEKS for Elementary, Middle, and High School art teachers. The class will discuss Jorge Wilmot's methods of ceramics that he learned in Mexico and in Europe. Specifically, the students will learn about the burnishing ceramic styles of *Tonalá* and *Barro Bruñido*. Next, the teacher will discuss the processes taken to create both functional and non-functional ceramic work. Then, the students will begin working on their own ceramic work that is inspired by Wilmot's *Tonalá* ceramic process.

To access the lesson plan, [click here!](#)

To information on the artwork, [click here!](#)



## Tyler Museum of Art's Elements and Principles of Design: Lesson Plan and Activity

This lesson plan and following activity define each of the principles and elements of design. Art examples of each element and principle are included with the vocabulary words. The artworks used in the lesson are from the Tyler Museum of Art's permanent collection.

To access the lesson plan, [click here!](#)

To access the activity, [click here!](#)

For information on the artwork, [click here!](#)

## Student Exhibitions:

### *21<sup>th</sup> Annual High School Art Exhibition*



#### **Previous Best in Show:**

#### **20<sup>th</sup> Annual High School Art Exhibition**

Katie Gonzalez, *Peaceful Rainy Day*, Class  
of 2023 – 2024, Mixed Media, Cumberland  
Academy

The 21<sup>th</sup> Annual High School Art Exhibition is a yearly student exhibition held at the museum. High school teachers in the East Texas area submit their student's work to be exhibited in the museum's gallery.

The goal of this event is to showcase high school artwork and encourage the East Texas community to see the amazing artwork created by local students.

High school teachers need to email the museum at [ranthony@tylermuseum.org](mailto:ranthony@tylermuseum.org) to let the Education Department know you want to participate in the event. Teachers can also call the museum at: (903) – 595 – 1001.

After you contact the Education Department, or you receive an email from the museum, you will receive the exhibition entry form and the art format requirements.

Participating teachers need to bring their selected student artwork to the museum between **February 17, 2025 and March 2, 2025.**

---

## **Schedule a School Tour with the Tyler Museum of Art**



### **Planning a School Tour**

If you are interested in scheduling a tour for your students at the museum, please contact [ranthony@tylERMuseum.org](mailto:ranthony@tylERMuseum.org) and provide the following information:

- The grade level of the visiting students;
- The number of students who will attend;
- And three days in your class schedule that are available for the tour.

For more information, [click here!](#)

---

## **Tyler Museum of Art Connection**

For more information about the Tyler Museum of Art's events, activities, and educational tours:

Email: [ranthony@tylERMuseum.org](mailto:ranthony@tylERMuseum.org)

Call: 903-595-1001

---

## **Tyler Museum of Art: Memberships**



Members get free admission to all exhibitions plus access to members-only gallery openings and special events.

Free or discounted admission is available to hundreds of other museums through our North American Reciprocal Program (NARM) Card.

TMA Memberships are available at various levels, each providing support for our community-driven exhibitions and educational programs.

For more information, [click here!](#)

---

The next TMA Newsletter will be sent to teachers on: March 3<sup>rd</sup>, 2025.

Visit our website at: <https://tylermuseum.org/>

Visit our Facebook at: <https://www.facebook.com/TylerMuseumofArt>

---