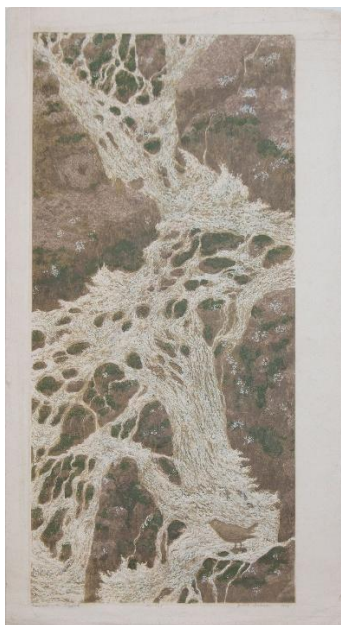




Tyler Museum of Art's Teacher Newsletter: February 2026

Exhibitions



***A Naturalist's Impression:
Works by Janet Turner***

The exhibition *A Naturalist's Impression: Works by Janet Turner* presents a variety of printmaking methods used by the artist. The collection of artworks focuses on the importance of environmentalism and a study of the animals in their natural habitats.

The exhibition is currently open, and it will close on March 8, 2026.

Information about the artwork: [click here!](#)



At 55: Tyler Museum of Art's Legacy

The *At 55: Tyler Museum of Art's* celebrates the 55th anniversary of the Tyler Museum of Art. The exhibition will present a variety of works selected from the museum's permanent collection.

The exhibition is currently open, and it will close on April 19, 2026.

Information about the artwork: [click here!](#)

Educational Activities and Events:



Family Day: In Person

The Tyler Museum of Art's Family Day program is held every second Saturday of the month from 1:00pm – 4:00pm at the museum. The event will have art activities for children and students of all ages, art books to read for all ages, coloring pages of the museum's permanent collection, and snacks. All art activities are compliant with the TEKS. Additionally, all Family Day participants will get free admission to the exhibitions.

For February, the project will be multi-media Valentine's Day activity. The event will be held at the museum on February 14, 2026 between 1:00pm – 4:00pm.

For more information on the Family Day Event, [click here!](#)

TMA Lesson Plans for Elementary, Middle School, and High School



Lesson Plan: Keith Carter, Tyler County

This lesson plan contains the National Learning Standards for Visual Arts and the Texas TEKS for High School art teachers. The students will study Keith Carter's photography style by discussing the photograph *Jack Whitt, Tyler County*. The class will plan an interview with a family member, friend, classmate, or a community member. The goal of the interview is to catalogue this person's work, goals, and character. After the students conduct their interview, they will take a photograph of the individual. The students will use the information gathered from the interview to best represent the chosen person.

To access the lesson plan, [click here!](#)

To access the artwork, [click here!](#)



Tyler Museum of Art's

Elements and Principles of Design: Lesson Plan and Activity

This lesson plan and following activity define each of the principles and elements of design. Art examples of each element and principle are included with the vocabulary words. The artworks used in the lesson are from the Tyler Museum of Art's permanent collection.

To access the lesson plan, [click here!](#)

To access the activity, [click here!](#)

For information on the artwork, [click here!](#)

Student Exhibitions:

22nd Annual High School Art Exhibition



Previous Best in Show:

21st Annual High School Art Exhibition

Lainey Tatum, *Dissonant*, Class of 2024 –
2025, Coloring Pencil on Paper,
Sulphur Springs High School

The 22nd Annual High School Art Exhibition is a yearly student exhibition held at the museum. High school teachers in the East Texas area submit their student's work to be exhibited in the museum's gallery.

The goal of this event is to showcase high school artwork and encourage the East Texas community to see the amazing artwork created by local students.

High school teachers need to email the museum at ranthony@tylermuseum.org to let the Education Department know you want to participate in the event. Teachers can also call the museum at: (903) – 595 – 1001.

After you contact the Education Department, or you receive an email from the museum, you will receive the exhibition entry form and the art format requirements.

Participating teachers need to bring their selected student artwork to the museum between **February 16, 2026 and March 1, 2026.**

Schedule a Free School Tour with the Tyler Museum of Art



Planning a Free School Tour and Art Activity

If you are interested in scheduling a tour and art activity for your students at the museum, please contact ranthony@tylERMuseum.org and provide the following information:

- The grade level of the visiting students;
- The number of students who will attend;
- And three days in your class schedule that are available for the tour.

For more information, [click here!](#)

Tyler Museum of Art Connection

For more information about the Tyler Museum of Art's events, activities, and educational tours:

Email: ranthony@tylERMuseum.org

Call: 903-595-1001

Tyler Museum of Art: Memberships



Members get free admission to all exhibitions plus access to members-only gallery openings and special events.

Free or discounted admission is available to hundreds of other museums through our North American Reciprocal Program (NARM) Card.

TMA Memberships are available at various levels, each providing support for our community-driven exhibitions and educational programs.

For more information, [click here!](#)

The next TMA Newsletter will be sent to teachers on: March 2, 2026.

Visit our website at: <https://tylermuseum.org/>

Visit our Facebook at: <https://www.facebook.com/TylerMuseumofArt>
